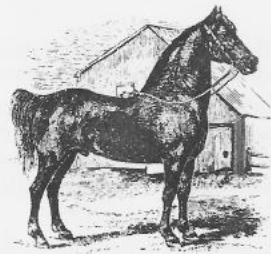


# American Morgan Horse Register

## REGISTRATION CERTIFICATE



THE MORGAN HORSE  
The pride and product of America  
This Certifies that the Morgan MARE

NAMED WMS LAUREL LADY BETTE No. 0158934 FOALED May 13, 2002  
"Qualified by DNA Testing"

COLOR DUN MARKED: FEW WHITE HAIRS ON FOREHEAD. STRIP. SNIP. BROWN EYES. BOTH  
HIND PARTIAL CORONETS. MEDIAN COWLICK ABOVE EYE LEVEL.

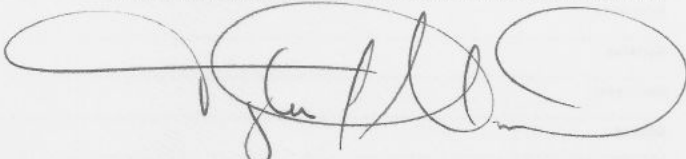
BRED BY Carol A Williams, Milan PA

DELMACTION TOP KING 105822 BAY DNA SBT	MANISTEE MAJESTIC 90273 BAY BT	APPLEVALE BOY KING 15978 BAY BT	KINGSTON 11906 BAY LEDGEWOOD PECORA 09867 CHNT WASEEKA'S SKYLARK 15061 BRWN BT VAL'S JESSIE 019390 BRWN BT UPWEY BEN DON 8843 BAY TINKERPAN 08236 CHNT SAWMILL BENSON 12827 BAY CALIFORNIA GIRL 011081 BAY ROYALTON ASHBROOK DARLING 10595 CHNT EQUINOX SARAH MIA 024313 BAY SBT ROBBI SUE MORALERT 20803 BAY PENDLETON BUCK MISSY 013876 BUCK ZIPO 25337 BAY FORDAM'S ALONAH 023708 BLK SUNCREST BOY 12067 CHNT FLICKA'S FOXY QUEEN 010463 CHNT
SUCCESSFULL REFLECTION 0143610 DUN DNA QBT	DELMACTION BEAUTY 026495 CHNT	ROYAL OAKS JESSICA 025548 CHNT QBT	
	ROYAL-T LADY KITRINA 090301 BAY	L'GHORN'S BELLE 014274 CHNT	
		EQUINOX BEAUBROOK 68228 BAY DNA DBT	
		ROBBI-SUE'S SWEET SUCCESS 131181 DUN DNA QBT	
		ROBBI-SUE MISALERT 030050 BUCK DNA BT	
		ROYAL T ZIPALONA 71780 BAY BT	
		FOXY'S PRIDE 013405 CHNT	



Current  
Record Owner  
595181  
Lee's Riding Stable Inc  
Lee Lyons  
57 E Litchfield Rd  
Litchfield, CT 06759-2800

is registered in the American Morgan Horse Register  
Given this 03 day of April 2003

THE AMERICAN MORGAN HORSE ASSOCIATION, INC.®  
  
REGISTRAR